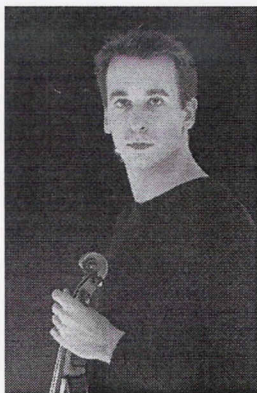


# Andrew Sords - Soloist



Violinist **Andrew Sords** has established himself as one of the preeminent new faces of classical violin. He is the winner of the 2005 National Shirley Valentin Violin Award, the 2004 and 2005 National Federation of Music Clubs Competition, the Fortnightly Music Club of Cleveland and the Festival de la Orquesta Sinfonica de las Americas Competition of the Casals Festival among others.

Born in 1985 in Newark, Delaware, Sords later moved to Shaker Heights, Ohio, and began his violin studies with Liza Grossman, the dynamic founder and Conductor of the Contemporary Youth Orchestra with whom he recorded the Saint-Saens Concerto No. 3.

Sords completed his undergraduate education at the Cleveland Institute of Music with violin pedagogues Linda Cerone and David Russell, and performed for the legendary Midori in master classes in New York and at the University of Southern California. Most recently, Sords studied under internationally acclaimed violinist Chee-Yun at the Southern Methodist University of Dallas, Texas. Having been exposed to the international stage, Sords has performed in American concert halls and venues in Europe, Latin America, the Caribbean and Asia.

In 2008 Sords received international exposure as the top Google Classical News story as well as topping the Top 40 Charts in Classical.

Strongly committed to extending classical music to all, Sords dedicates a portion of his time at almost every engagement to educational outreach, master classes and community programming.

Sords is the featured violinist in a documentary on violin technique. He has been honored by Pulitzer Prize nominated Composer Kellach Waddle who dedicated his violin sonata to the young violinist. Sords performs on a 1912 Augustine Talisse violin.

Sords will be the guest artist of the Clear Lake Symphony on their November 6 concert. He will perform the Mendelssohn *Violin Concerto in E minor*. You may visit his web site at [www.andrewsords.com](http://www.andrewsords.com).